



Byron Mews NW3

Parkheath  
*Sold on Service*





## **Byron Mews, NW3**

### **£530,000**

### **Leasehold**

- Spacious 1 bedroom purpose built apartment
- Set within private gated mews development
- Allocated off-street parking space
- 527 sq ft / 49 sq m
- 22' reception room, ideal for living and work space
- Well proportioned separate kitchen
- Large double bedroom with fitted storage
- Idyllic South End Green location, short stroll to Hampstead Heath
- 5 minute walk to Hampstead Heath station
- 10 minute walk to all amenities of Belsize Park including Northern line underground station

Belsize Park/Hampstead  
208 Haverstock Hill  
NW3 2AG  
Sales 020 7431 1234  
Lettings 020 7431 3104  
[nw3@parkheath.com](mailto:nw3@parkheath.com)

South/West Hampstead  
192 West End Lane  
NW6 1SG  
Sales & Lettings  
Tel 020 7794 7111  
[192@parkheath.com](mailto:192@parkheath.com)

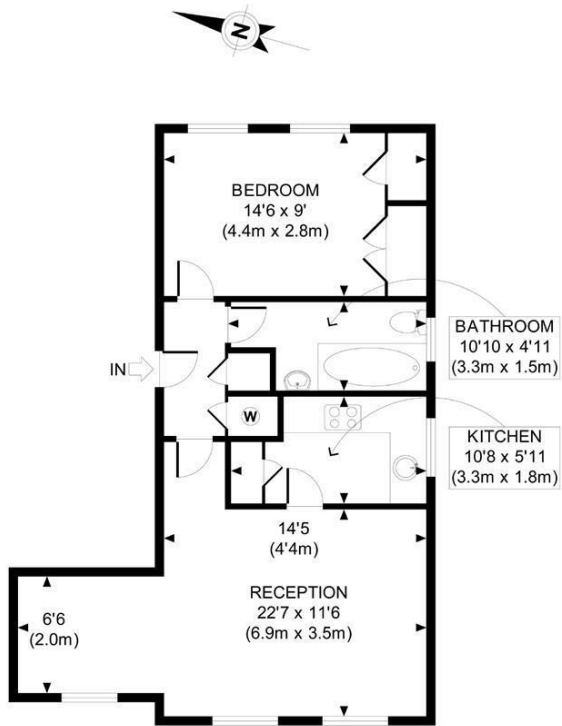
Kensal Rise  
54-56 Chamberlayne Rd  
NW10 3JH  
Tel 020 8960 4845  
[kensal@parkheath.com](mailto:kensal@parkheath.com)

Property Management  
192 West End Lane  
NW6 1SG  
020 7433 6174  
[pm@parkheath.com](mailto:pm@parkheath.com)

[www.parkheath.com](http://www.parkheath.com)

**Parkheath**  
*Sold on Service*

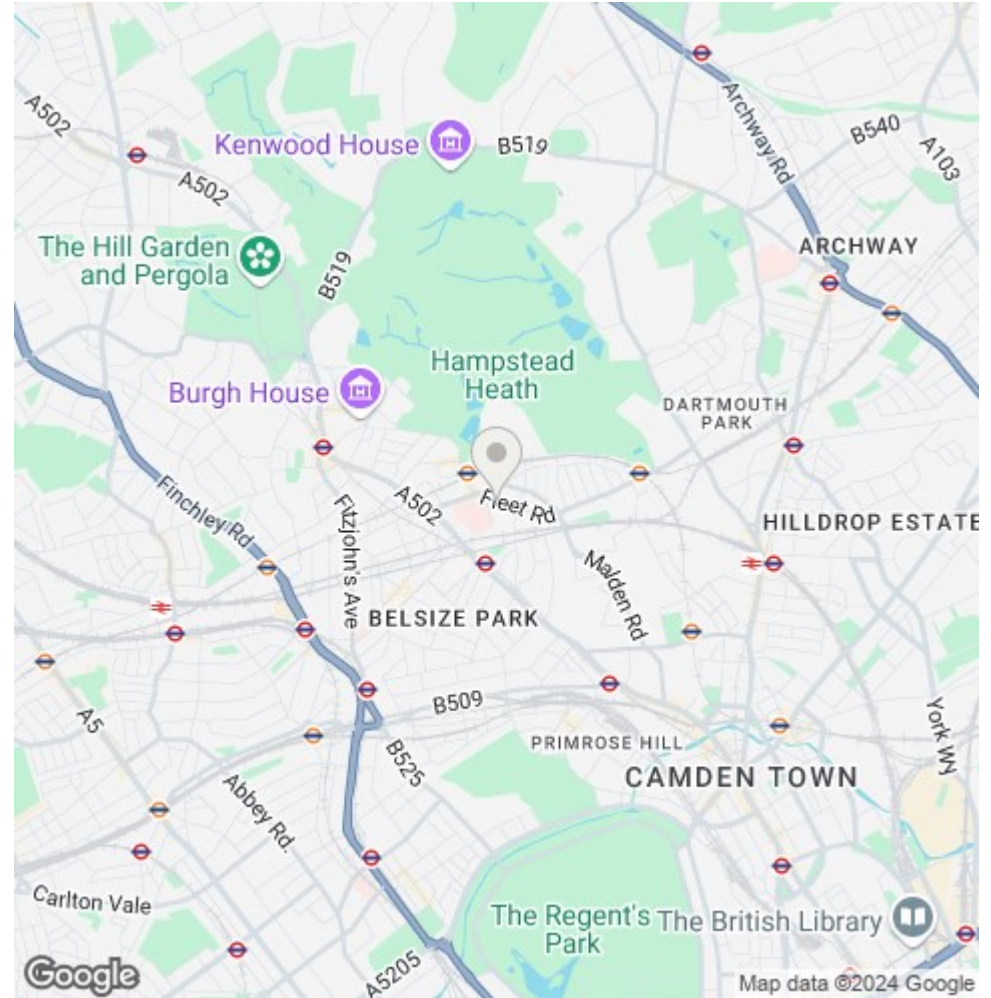
**Camden Tax band F**



FIRST FLOOR  
GROSS INTERNAL  
FLOOR AREA 527 SQ FT

APPROX. GROSS INTERNAL FLOOR AREA 527 SQ FT / 49 SQ M  
Ref: **PARKHEATH BP - 030212** Copyright **photoplan.co.uk**

Floorplans are for identification and guideline purposes only, not to scale.  
Compliant with RICS code of measuring practice.



The particulars do not constitute part of an offer or contract. The particulars, including text, photographs and plans, are for the guidance only of prospective purchasers/tenants and must not be relied upon as statements of fact. The descriptions provided therein represent the opinion of the author and whilst given in good faith should not be construed as statements of fact. Nothing in these particulars shall be deemed a statement that the property is in good condition or otherwise or that any services or facilities are in good working order. All measurements are approximate